

**Basic safety instructions**



**WARNING**

**Danger of death through electric shock or fire!**

➤ Installation should only be carried out by a qualified electrician!

**Designated use**

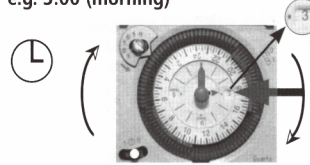
- The time switch can be used for lighting, ventilation, fountains, advertising hoardings etc.
- Only for use in closed, dry rooms
- Installation on DIN top hat rail (in accordance with DIN EN 60715)
- Embedded installation, terminals and batteries are not touch

**Disposal**

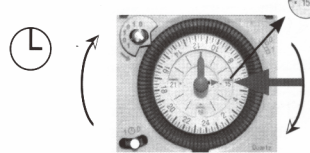
Dispose of device in environmentally sound manner

**Set time**

e.g. 3:00 (morning)



e.g. 15:00 (afternoon)



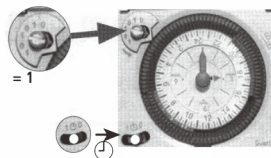
**Set switching times**

e.g. 6:15–10:45; 16:15–21:00 ON



**Set manual operation/ switching pre-selection**

in advance 3:00 ON (= 1)



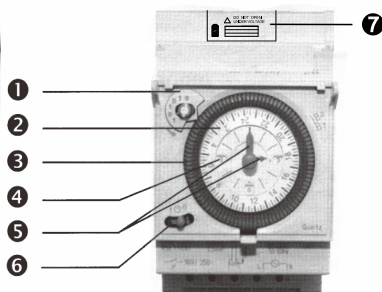
The time switch operates the set switching times, i.e. it returns to program.

**Set 1 – 0 permanent switching**

Program is not operated.  
1 = Permanent ON  
0 = Permanent OFF

Connection, technical data see on the back side

**Description**



- 1 Switching pre-selection/manual setting
- 2 Program timing disc  
Use at least two switching segments at each activation
- 3 Switching segments (1 = 15 mins)
- 4 Morning/afternoon (AM/PM) time display
- 5 Hand for setting time (hours and minutes) can be adjusted anti-clockwise and clockwise; turn minute hand firmly to left
- 6 Three way switch:  
Permanent ON – AUTO – Permanent OFF
- 7 Replaceable battery bin

**Connection/installation**



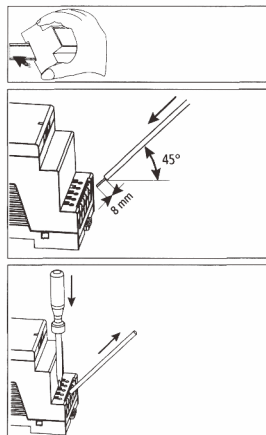
**WARNING**

**Warning, danger of death through electric shock!**

- Must be installed by qualified electrician!
- Disconnect power source!
- Cover or shield any adjacent live components.
- Ensure device cannot be switched on!
- Check power supply is connected!
- Earth and bypass!

with battery

- Quartz movement only starts in a few minutes after power is switched on.
- Full power reserve is achieved after approx. 5 days.
- Do not open under voltage.



**Technical Data**

Operating voltage (Input voltage)	110~230V 50-60Hz
Power consumption	max.2VA
Contact	two-way switch
GAP	<3mm(μ)
Contact material	AgCd015
Switching capacity	16A 250VAC COS φ=1
Program	Daily program
Shortest Switching time	15 min
Action time precision	≤ ± 5 minutes(Not including initial time to adjust error)
Time accuracy	≤ ± 2s/day(Quartz)
Power reserve	R200h(230VAC) R100h(110VAC) (Can replace battery)
Ambient temperature	-10°C...+55°C
Protection class	II in accordance with EN 60730-1 for designated installation
Type of protection	IP 20 in accordance with EN 60529
Pollution degree	2